

Vector U200 Specimen Marking

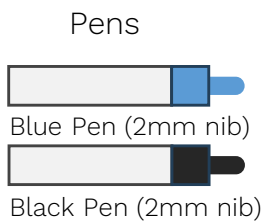


Vector measures strain or extension via markings applied to the specimen. There are three mark types: Rings, Filled Circles and Speckles. The mark type used depends on specimen geometry.

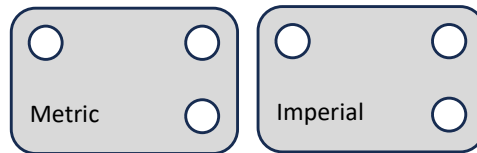


Rings and Dots

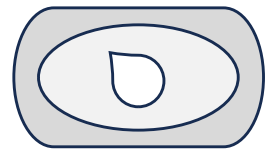
Kit



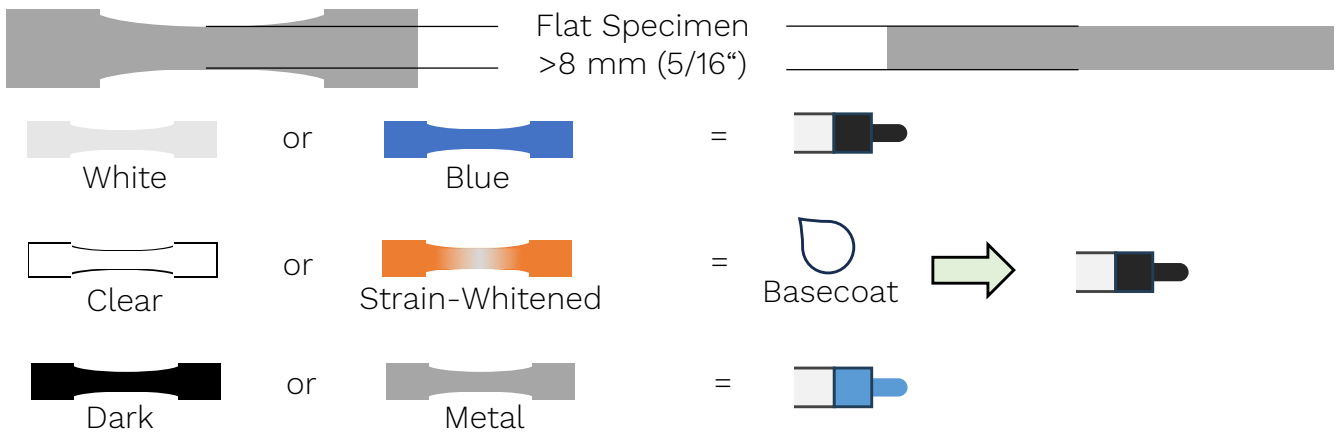
Stencils



White Ink

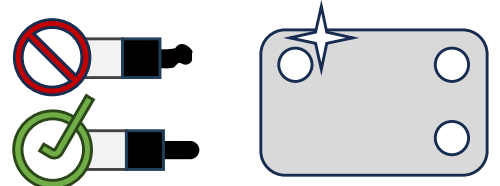
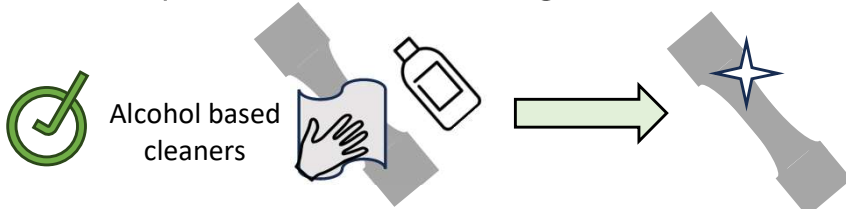


Uses



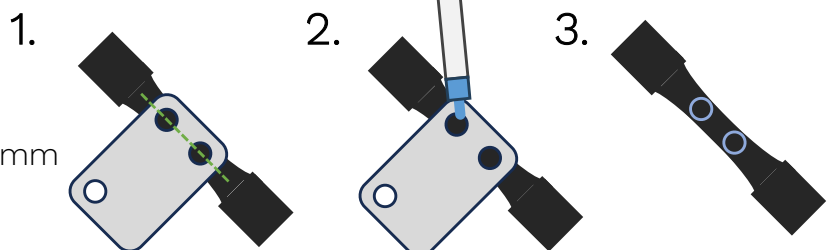
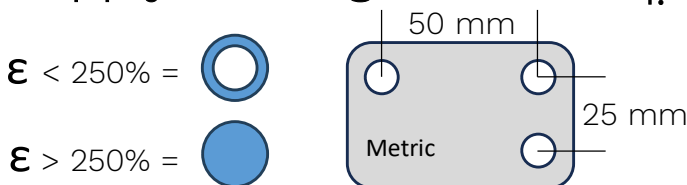
Prepare

Clean specimen to remove grease and dust:



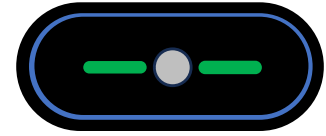
! Do not touch reduced section of specimen once cleaned.

Apply Markings



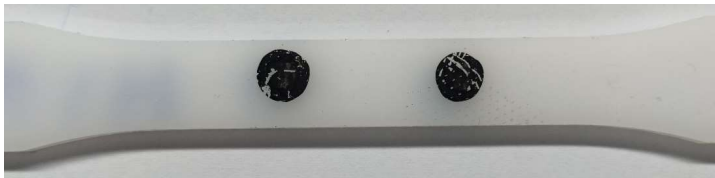
Rings and Dots

Good Examples



Status Measuring

Poor Examples



Issue

Possible Cause

Misaligned

- Stencil set off-centre from specimen.

Misplaced

- Stencil placed too close to shoulder and away from centre line.

Smudged

- Ink smudged when removing stencil.

Scratched

- Specimen poorly handled.

Irregular

- Marking applied by hand.

Mismatched

- Markings applied with kit intended for Vector U70.

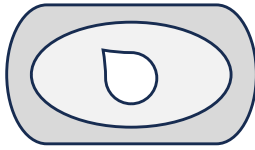
Ineffective

- Specimen not cleaned, or basecoat not applied before marking specimen.

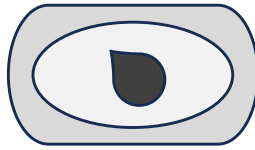
Speckles

Kit

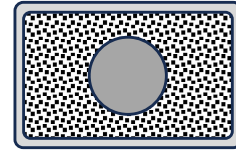
White Ink



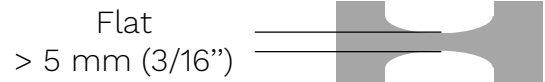
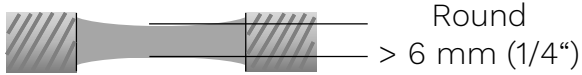
Black Ink



Speckle Stamp



Uses



or



=



or



=



Basecoat



or

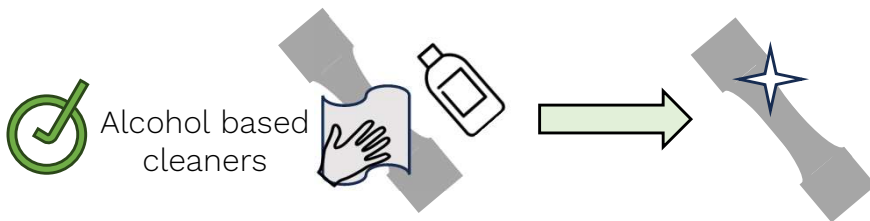


=



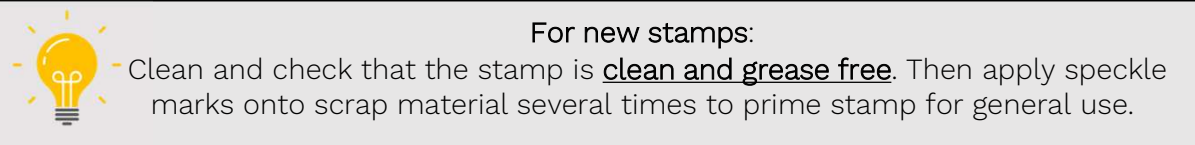
Prepare

Clean specimen to remove grease and dust:



Do not touch reduced section of specimen once cleaned.

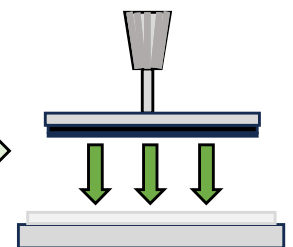
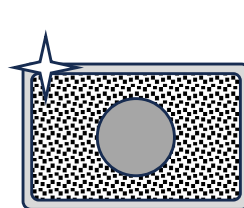
Clean and prepare equipment:



Acetone, oil-based cleaners



Compressed air + Isopropyl + Micro fibre cloth



Place stamp on top of ink pad between marking specimens.

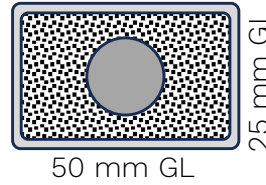
Apply Markings

1. Prepare work area

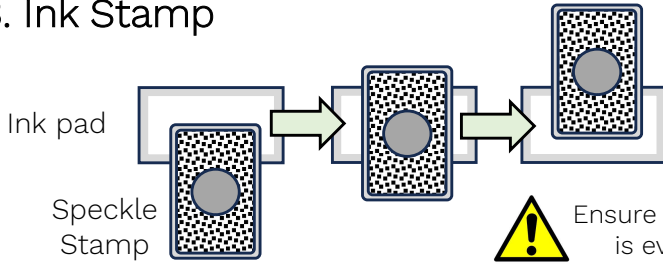


Place a clean sheet of paper under specimen before stamping.

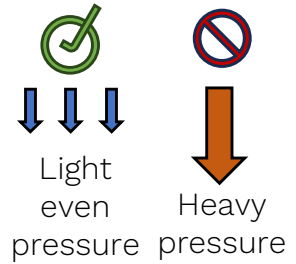
2. Select Gauge Length



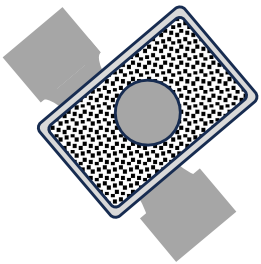
3. Ink Stamp



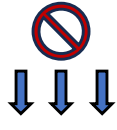
Ensure that entire stamp pad is evenly coated in ink.




4. Apply stamp to specimen



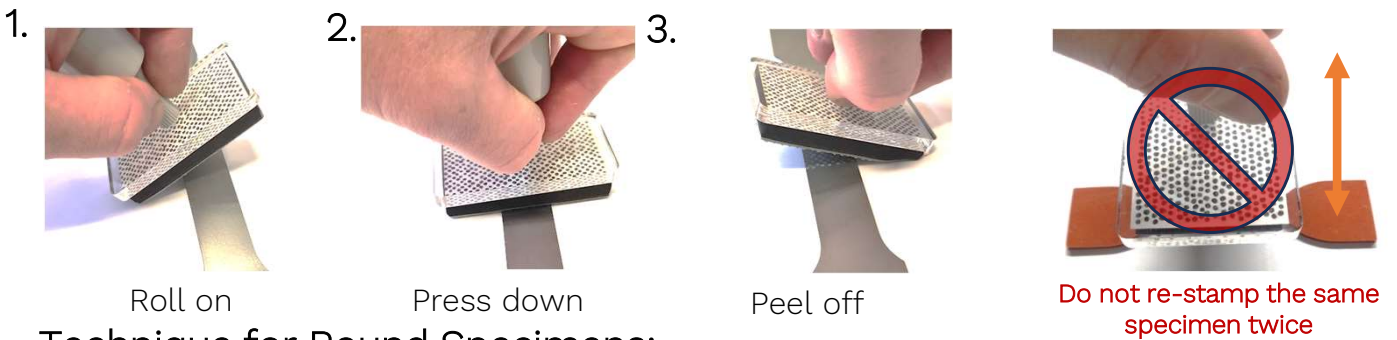
Firm even pressure



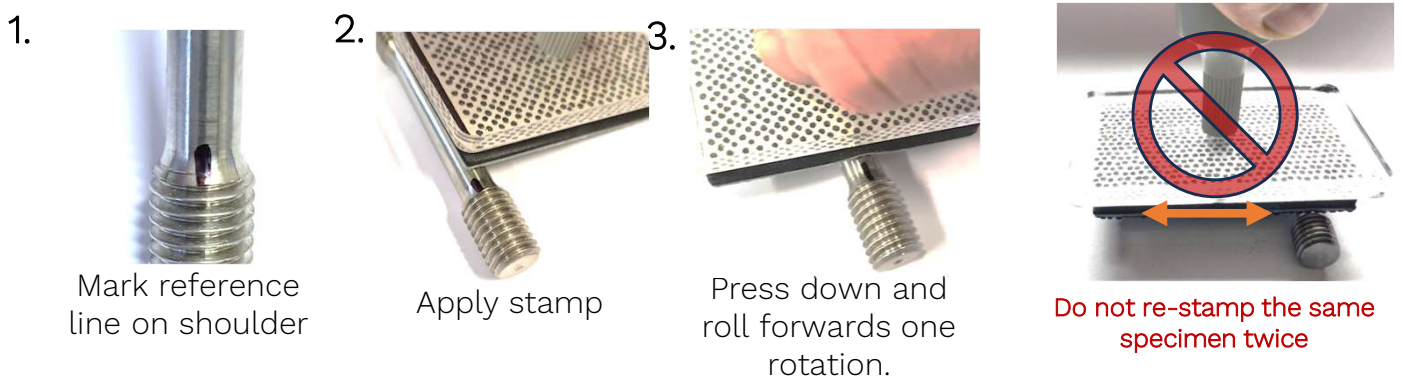
Light pressure


 Top tip: allowing for the ink to dry slightly on the stamp before applying will minimise the likelihood of slipping.

Technique for Flat Specimens:



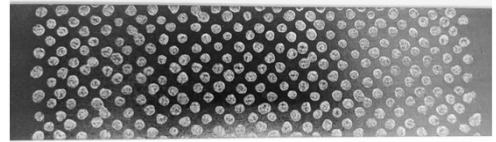
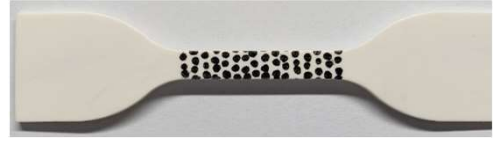
Technique for Round Specimens:



 Top tip: A crisp 'peeling' sound when removing stamp from specimen is a good indicator that the speckle pattern has been applied effectively.

Speckles

Good Examples



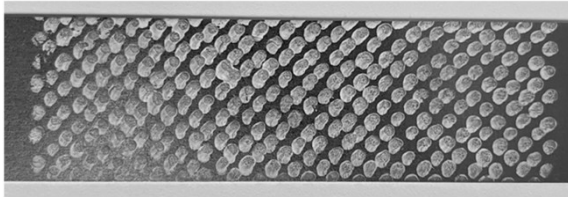
Good speckle patterns consist of high contrast speckles, with evenly inked blots covering a large area of the specimen.

Poor Examples



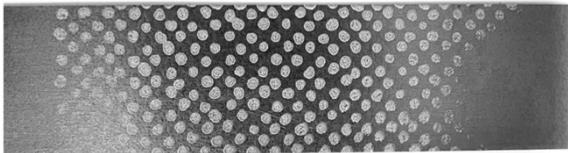
Faint

- Too little ink, or not enough pressure during stamping.



Smudged

- Too much ink on stamp.



Patchy

- Uneven pressure during inking and/or marking stages.



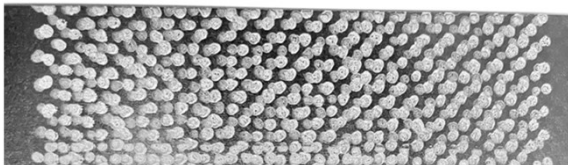
Irregular

- Markings applied by hand.



Excess markings

- Markings applied on the shoulder of specimen.



Marked twice

- Markings applied twice on same specimen.



Mismatched

- Markings applied with kit intended for Vector U70.

